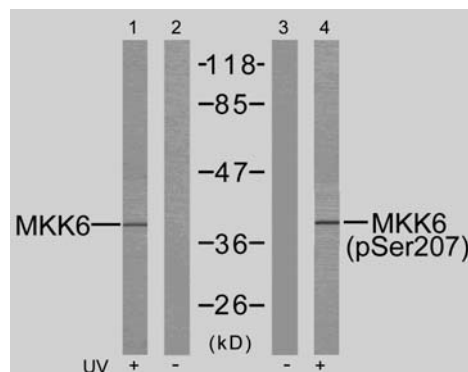


Rabbit anti MKK-6 (Ab-207)

- Catalog Number:** AP21153
Amount: 100µl (for 10 Western Blotting)
Form of Antibody: Rabbit IgG in phosphate buffered saline (without Mg²⁺ and Ca²⁺), pH 7.4, 150mM NaCl, 0.02% sodium azide and 50% glycerol.
Storage/Stability: Store at -20°C/1 year
Immunogen: The antiserum was produced against synthesized non-phosphopeptide derived from human MKK6 around the phosphorylation site of serine 207 (V-D-S^P-V-A).
Purification: The antibody was affinity-purified from rabbit antiserum by affinity-chromatography using epitope-specific immunogen.
Specificity/Sensitivity: MKK6 (Ab-207) antibody detects endogenous levels of total MKK6 protein.
Reactivity: Human, Rat
Applications: WB: 1:1000
Swiss-Prot No. : P52564
References: Wang W, et al. (2002) Mol Cell Biol ; 22(10): 3389-403.
Raingeaud J, et al. (1996) Mol Cell Biol; 16(3): 1247-55.



Western blot analysis of extract from MDA-MB-435 cells untreated or treated with UV, using MKK6 (Ab-207) antibody (AP21153, Lane 1 and 2) and MKK6 (phospho-Ser207) antibody (pAP011146, Lane 3 and 4).

For Research Use Only

Contact & Ordering Information: Angio-Proteomie, 11 Park Drive, Suite 12, Boston, MA 02215, USA. Fax: (480) 247-4337, angioproteomie@gmail.com